

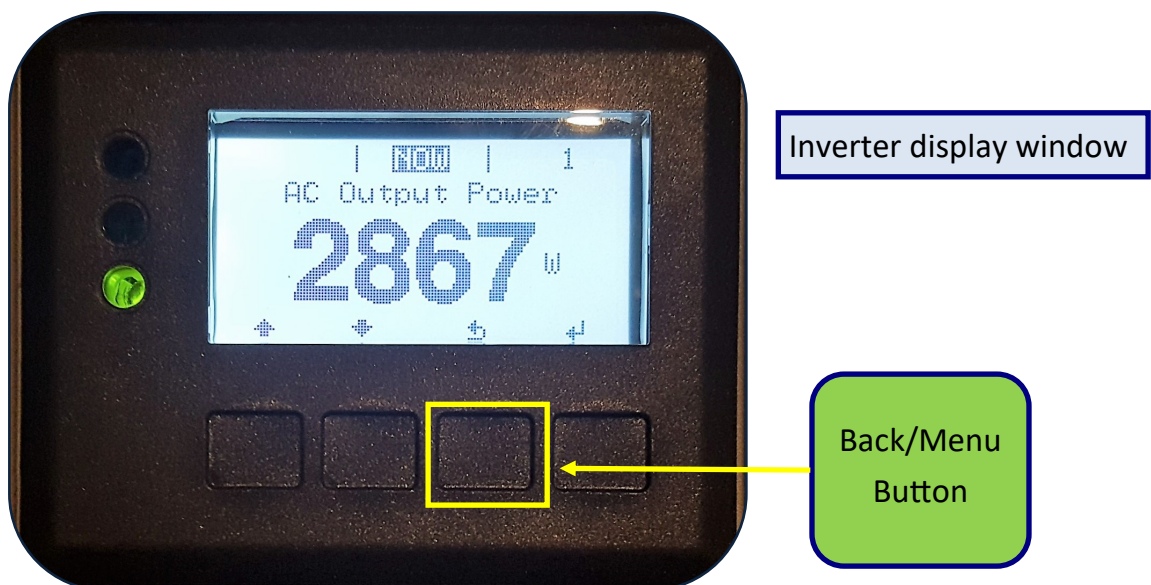
Connecting Solar to Your Home Network

If you change your router, the name of your router, or the router password for your home network, follow these steps to reconnect your inverter to the internet in order to continue to monitor your solar production:

BEFORE GETTING STARTED,

- A. You will need the network name (SSID) and password of the home network you are connecting to your inverter.
 - B. You can do this by confirming your computer, mobile device, and/or other devices are connected to the network. Verify WiFi is working and verifies the network name and password are valid.
-

- 1 **ACTIVATE the *WiFi Access Point* on the inverter.** Locate the display window on your inverter. The current electric production output will be displayed. Press the ***Back/Menu*** button (2nd from the right) to get to the main menu.



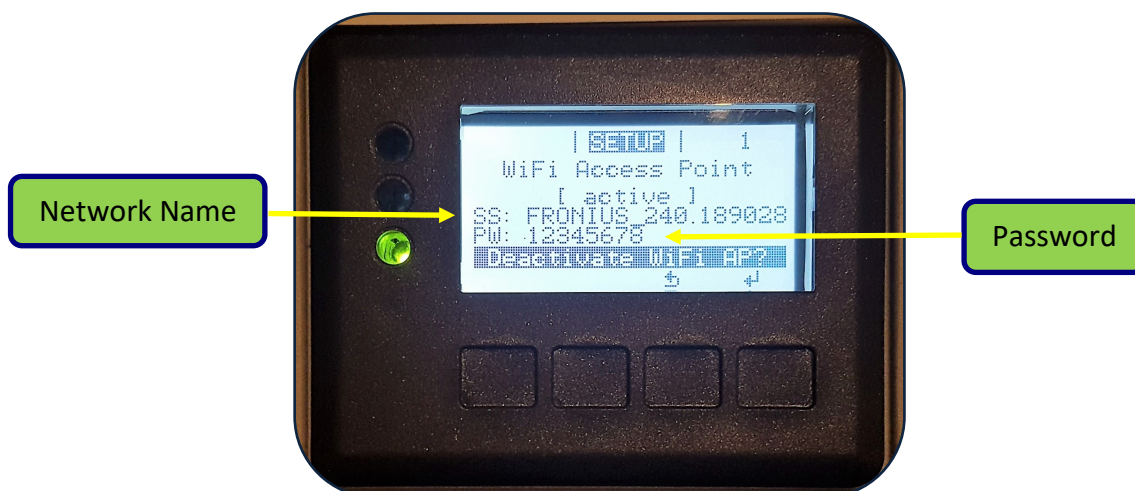
- 2 Select one of two Scroll buttons (left or right) and press the button several times until **SETUP** appears. Press the **Enter** button.



- 3 Press the **Scroll Down** button until you arrive at **WiFi Access Point**. Press the **Enter** button. Press the **Enter** button again to **Activate WiFi Ap**.



-
- 4 Once the WiFi Access Point is activated, the network name (SS) and password (PW) will be displayed. **STOP!** Do not hit any buttons.



This completes the steps to take of the inverter. Follow the next steps to complete the connection to the internet. The remaining steps involve use of a wireless device. iPhone and Android phone models are used in the example.

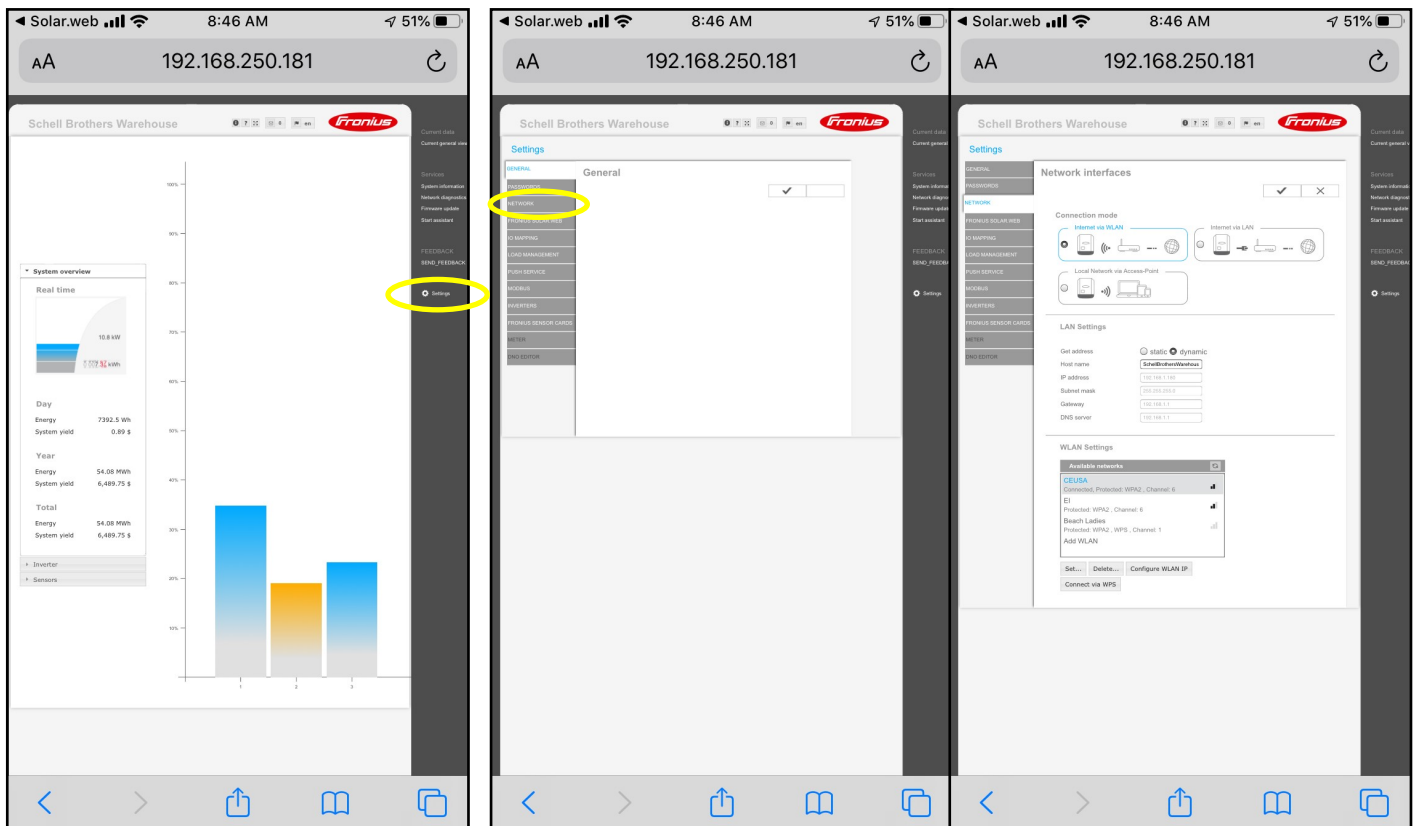
-
- 5 **Connect your wireless device to the inverter network.** On your smart phone or tablet:
- A. Access **Settings**.
 - B. Select **WiFi**.
 - C. Look for the Fronius inverter network. (SSID: FRONIUS_240.XXXXXX)
 - D. Select the network on your phone. A password box will appear.
 - E. Enter the password **12345678** that appears in the inverter display screen.
 - F. Select **Join**.

Notes: - If you have connected your wireless device to this network before you may not be prompted to enter a password as most devices save the password automatically.

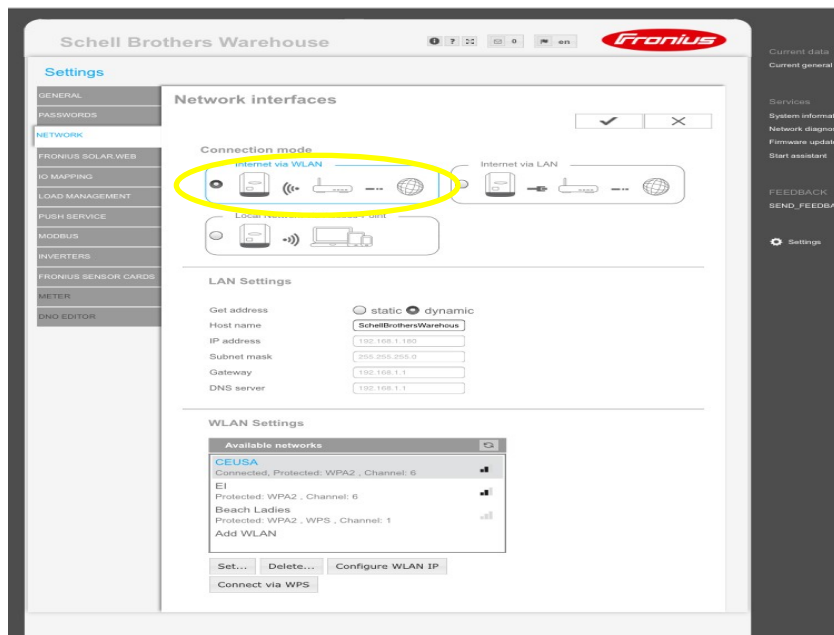
- This network will not have internet connection. It is solely for communication between your device and the Inverter.

6 Access the inverter's embedded webpage. Once your smartphone/tablet is connected to the FRONIUS_240.XXXXXX network, open a web browser and type 192.168.250.181 into the URL box. **You should notice that the Fronius system monitoring embedded webpage loads.** Select **Settings** (to the right) and then **Network** (from the list of options).

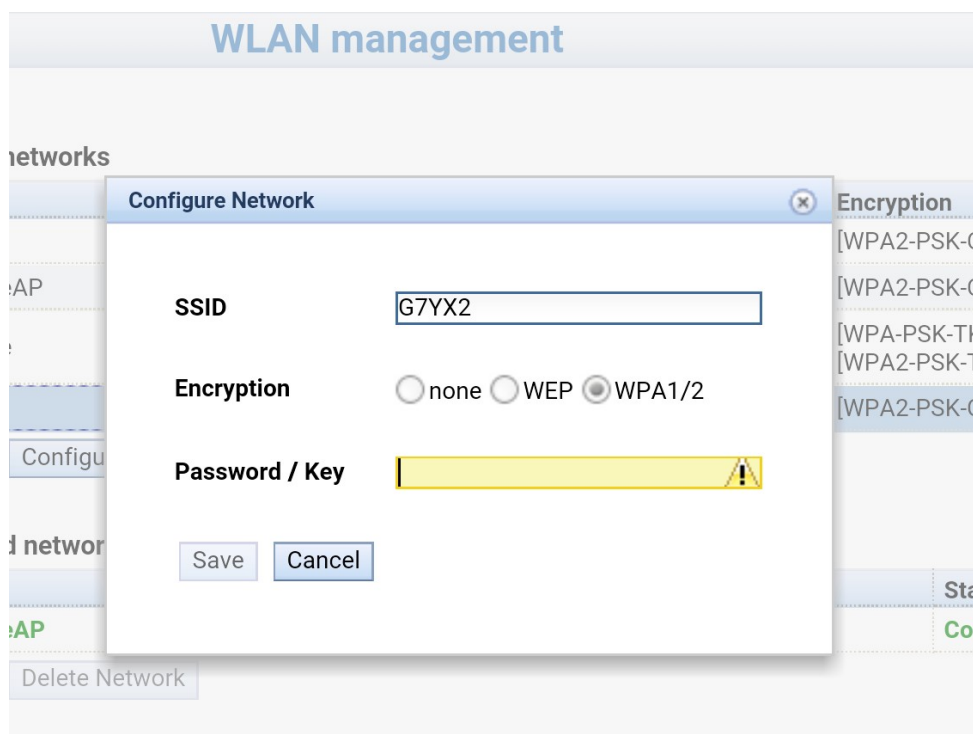
Select Settings & then
Network



- 7 Select **WLAN** from the list of Network Connection Modes. Then locate your home network in the *Available Networks* window. Select your home network and then click **Set** to type in the password.

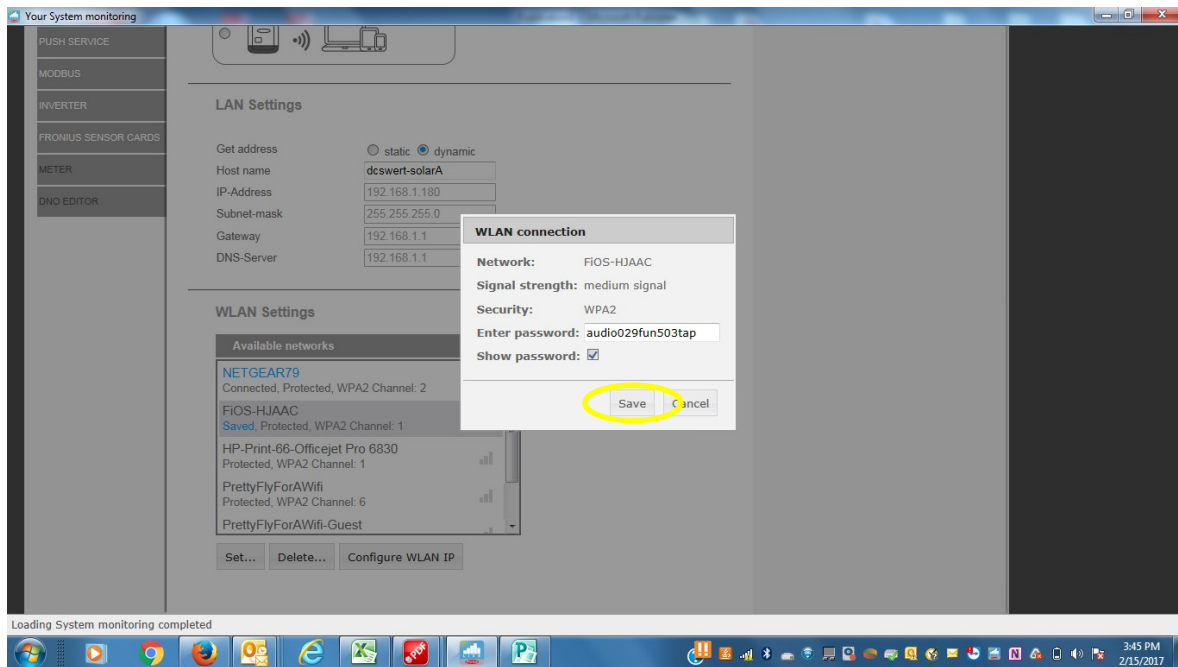


- 8 Enter your password. Enter your network password in the *Password / Key* field. Click **Save**.



9

Click the Save button. This will save your changes before the internet connection is finalized.



10

Apply Settings. The webpage below will reappear. Click the check mark to finalize the connection to the internet. You should now get a notification that says “new settings will now be applied.”

